



# WALTHAM ST LAWRENCE PRIMARY SCHOOL

## NEWSLETTER

School Road, West End, Reading, Berkshire RG10 0NU | Telephone: 0118 9343248 | Email: [office@wslprimary.org](mailto:office@wslprimary.org) | Headteacher: Mrs L-J Ellerton

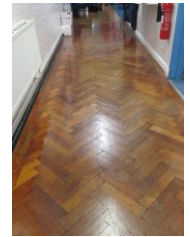
Weekly Newsletter Number 08

Friday 3<sup>rd</sup> November 2017

Dear Parents/Carers,

The children have carried on where they left off last term, with enthusiasm and positivity! It is wonderful to see everyone back after a week's break looking refreshed and ready for another eventful term in the run up to Christmas.

Over the holiday last week our Premises staff were busy looking after our school learning environment as part of our ongoing School Improvement Projects. Mr Timms, our Handy Person, redecorated walls in Red Kites classroom, skilfully handmade a bookshelf for our Library and carried out a safety check in and around the school; Sharon and Billy, our Cleaners, polished the wooden floor in the corridor and thoroughly cleaned the whole school. Here are a few photos:



On the Inset Day 30<sup>th</sup> October all teachers worked hard on updating and analysing pupils' progress data using our OTrack and Class Track Assessment System. We also held Pupils Progress Meetings and evaluated our provision to ensure all children are well supported to achieve their best.

The safety and security of our children and staff is a top priority for WSL Primary School. On Inset Day teachers also received Lockdown Procedures and the School's Emergency Plan Training. All the staff will be trained during the next week. Please refer to the Lockdown Procedures letter sent home today.

I am pleased to share the priorities for School Improvement Plan (SIP) 2017-18 which staff and governors discussed and agreed in Term 1. The aim of this plan is to not only maintain our Outstanding standard in all areas but also to build upon it and improve the school further. Our SIP is driven by our School Mission Statement which reflects what we believe and do and what we aspire to achieve and also based on School Self Evaluation, Performance Data and external views from RBWM, parents survey etc. Please refer to the SIP Priorities Summary sent home today, which is also available on the School Website.

### As we start a new term, here are some reminders:

- In order to **develop self-help skills and independence** of all children from Reception to Year 6, we would encourage parents to say goodbye to their children at the entrance, let your child/ren walk into the playground by themselves.
- Encourage your children to hang up their coats, PE Kit bags and organise their lunch boxes etc. on their own. This will help avoid congestion in the Cloakroom.
- Children must have their **PE kit in school every day**, not just PE days. They also need to ensure that they have adequate long sleeve tops and tracksuits as the weather turns colder.
- Please provide your child with **healthy snacks** e.g. fruit or vegetables and fresh water.
- **Please park safely near school.** If you see any vehicles parked illegally near school please phone and report the details to the Police on 101.
- **Dogs (including puppies) are not allowed on the School site – except guide dogs.**  
If you walk a dog to school you will need to tie your dog to a fence a good distance from the school gates. Thank you for your cooperation
- **When sleep is abundant, minds flourish.** We often notice some of our children are just so tired...The impact that poor sleeping patterns can have on a child's (and adult's) ability to concentrate and learn is remarkable. Please make sure your child goes to bed at an appropriate time. If you are having difficulties establishing these good patterns of sleeping with your child, please come to see us.

**Growth Mindset Workshop for Parents** will take place in the School Hall on **Tuesday 7<sup>th</sup> November at 9.00am and at 2.15pm (repeat)**. Please let the School Office know that you are attending. This will help us with the seating arrangement.

Have an enjoyable weekend.

L-J Ellerton

Head Teacher

“ TOGETHER WE INSPIRE AND ACHIEVE ”

## Sunshine Book

Congratulations to all the children for their actions in demonstrating and promoting the school values throughout this week.

<b>Owls:</b>	James Roylance	Lily Spooner
<b>Robins:</b>	Abigail Mason Gloria Mastroianni	Maya sharma-Grey
<b>Skylarks:</b>	Gabriele D'Orazio	Oliver Sell
<b>Red Kites:</b>	Amelie McIntosh Abigail Donnelly	Lucas Mumford
<b>Kestrels:</b>	Tristan Sell	Archie Buekers

## House Points

	Weekly Total	Rolling Total
Brunel (Blue)	254	2090
Galileo (Green)	282	2474
Redgrave (Red)	176	1881
Yeats (Yellow)	238	1826

The Winning House for this week is **Galileo**. Well done.

## Attendance

**Good attendance is crucial to children making progress.**

**Every day, every half day and every lesson counts!**

**Class Attendance for 30-10-17 to 03-11-17**

Owls 98.4% Red Kites 95.8%

**Robins 99.5%** Kestrels 94.1%

Skylarks 95.8% Whole School 96.9%



## Thank You...

to Mrs Bye and Mrs Richardson for donating glue sticks to Robins and Red Kites Class. Your generosity is greatly appreciated.

## Lunchtime Controller Appointment

We are all delighted to welcome Miss Nikita Damouche to WSL who was appointed as full time Lunchtime Controller. We wish her all the best at WSL.

## New Choir Club in Term 2

Mrs Wiseman has started a Choir Club which takes place every Tuesday at Lunchtime.

## Gardening Club

Gardening Club started yesterday. Children thoroughly enjoyed weeding and working together. Please make sure your child has the suitable clothes and shoes for Gardening Club.

## Class Pages & The Age Related Expectations

The **Class Pages** have been updated on our School Website to keep you informed of what your child's class have been learning or what they will learn and ideas for you to support your child's learning at home.

To achieve the very high End of Year Expectation for each year group and your child's full potential, we need your valuable support in your child's learning. Without that partnership it will not be possible for your child/ren to fulfil their potential.

The Age Related Expectations (ARE) or Key Objectives for Reading, Writing and Maths for each year group are available on the school website [www.wslprimary.org](http://www.wslprimary.org) under 'Key Information-Curriculum' section.

## PTA Halloween Fancy Dress Disco

Thank you for your support we have made **£468**. Well done everyone! We had a lot of fantastic feedback about the evening – so make sure you look out for the next PTA event.

## PTA Meeting

PTA meeting will take place on **Tuesday 7<sup>th</sup> November at 19.30 in School**. Everyone is very welcome and we would love to see some new faces.

## Lost Property

If you think your child has lost anything in school, please, please look in the lost property box (it is overflowing!). **The contents of the lost property will be displayed outside the Main Entrance at the end of today. Please check.** Any items not claimed will be donated to Bag2School on 21<sup>st</sup> November or sent to a charity shop.

## Collection of Children at the End of School Day

Your children's welfare is our priority and it is important that we know every child is collected by a designated adult.

We would like to remind you that the School is NOT a public place, your children should be picked up on time after school as staff have other commitments or sometime staff are off site for training purposes. We have such a wonderful extended school provision **After School CARE Club**, you can always book a session for your child if you are going to be late or busy that day. This way your child is kept safe and looked after by the CARE Club staff.

## Open Mornings for Prospective Parents Year R Sept 2018

If you have a child due to start school next September, or you know anybody who does, please note that we are holding three Open Mornings when parents/carers can come and look around the school and ask any questions they may have. These will take place from 9.30-11.30am on

**Wednesday 15<sup>th</sup> November 2017**

**Tuesday 9<sup>th</sup> January 2018**

## Bag2School Collection

We are having another Bag2School fundraising event in November. Please bring as many bags to school as you can on Tuesday morning of **21<sup>st</sup> November at 9.00am** when they will be collected. We are sending the bags home today, but you may also use ordinary bin bags or plastic carriers. If you would like to know more about Bag2School, the website address is [www.bag2school.com](http://www.bag2school.com) **Please DO NOT bring bags to School before the date as we have no places in School to store them. Thank you.**

## Winter Gig on Saturday 9<sup>th</sup> December 2017

WSL Cricket Club will be putting on their first Winter Gig! The event will take place on Saturday 9<sup>th</sup> December 2017, with doors opening at 19.00, featuring 90s and Noughties hits - Everything from Blur and Oasis to Katy Perry, Girls Aloud and Amy Winehouse and Hired Guns will bring you hits from the last 25 years (<https://hiredguns.band/>), plus support from Alex Greer, an acoustic solo act. Tickets for this are limited with 120 seats indoors. Please reserve your tickets as soon as possible. Normal pricing at £12 per adult, please contact Rupe via [rupendupatel@yahoo.co.uk](mailto:rupendupatel@yahoo.co.uk) or 07775 712546

**Our mission is to provide inspiration and opportunities for all children to achieve their potential and become confident, independent individuals with key skills for lifelong learning**

**Staff and Governors of Waltham St Lawrence Primary School are committed to the safeguarding of children**  
 Designated Lead Person for Safeguarding and Child Protection: Mrs Li-Juan Ellerton (Headteacher)  
 Designated Teacher: Mr David Errington (Senior Teacher)  
 Designated Governor: Mr Dan Collinson (Parent Governor)

**Dates for your Diary**

**Academic Year 2017-2018**

**Term 2 (37 days)**

<b>October</b>	Mon 30 <sup>th</sup>	<b>Inset Day – School Closed</b>	
	Tues 31 <sup>st</sup>	Pupil Term starts	
<b>November</b>	Tues 7 <sup>th</sup>	Growth Mindset Workshop for All Parents	9:00am & 2:15pm
		<b>PTA Meeting in School</b>	<b>7.30pm</b>
	Mon 13 <sup>th</sup> –Fri 17 <sup>th</sup>	Anti-Bullying Week	All Week
	<b>Fri 17<sup>th</sup></b>	<b>Power of One anti-Bullying Workshops</b>	<b>1.00-3.00pm</b>
	Tues 28 <sup>th</sup>	Flu Vaccination for Year R – Year 4	
	Wed 15 <sup>th</sup>	Open Morning to Prospective Parents	9.30-11.30am
	Fri 17 <sup>th</sup>	Anti-Bullying Week and Internet Safety Family Assembly	9.00am
	Tues 28 <sup>th</sup>	PTA AGM	6.30pm
<b>December</b>	Tues 5 <sup>th</sup> -Mon 11 <sup>th</sup>	Travelling Book Fair	3.00-3.45pm
	Fri 8 <sup>th</sup>	Whole School Christingle Service in WSL Church	2.00pm
	Mon 11 <sup>th</sup>	EYFS and KS1 Nativity Play Dress Rehearsal	1.30pm
	Wed 13 <sup>th</sup>	EYFS/KS1 Nativity Play to Parents	1.30pm
		KS2 Christmas Carol in WSL Church – detail to follow	7.00pm
	Thurs 14 <sup>th</sup>	EYFS and KS1 Nativity Play to Parents in School Hall	9.30pm
	Fri 15 <sup>th</sup>	Christmas Lunch	12.00pm
		PTA Christmas Fair	3.00-5.00pm
	Tues 19 <sup>th</sup>	End of Term 2 and Break up	1.15pm

**CHRISTMAS HOLIDAY: Wednesday 20 December 2017 to Tuesday 2 January 2018**

**Term 3 (28 days)**

<b>January</b>	Wed 3 <sup>rd</sup>	<b>Inset Day School Closed</b>	
	Thurs 4 <sup>th</sup>	Pupil Term starts	
<b>February</b>	Fri 9 <sup>th</sup>	End of Term 3	
	<b>February Holiday: Monday 12 February 2018 to Friday 16 February 2018</b>		

**Term 4 (29 days)**

<b>February</b>	Mon 19 <sup>th</sup>	Pupil Term starts
<b>March</b>	Thurs 29 <sup>th</sup>	End of Term 4

**Spring Holiday: Friday 30 March 2018 to Friday 13 April 2018  
 (Good Friday: 30 March 2018 and Easter Monday: 2 April 2018)**

**Please do not book family holidays during term time. Please note that Staff Inset Days are subject to change.**

**Dates /times added/changed will be highlighted**

**All dates to the end of the year can also be found on the school website [www.wsprimary.org](http://www.wsprimary.org)**

**Information / Letters sent home or can be accessed on the school website this week:**

- Mindfulness Letter to Year 6
- Lockdown Procedures Letter to all
- School Improvement Plan Key Priorities for 2017-18 to all
- GIG Flyer to all