



# Art and Design

Landscapes and Cityscapes

# Monet's Cityscapes



# Aim

- I can use pastels to create a cityscape.
- I can describe the work of the artist, Monet.

# Success Criteria

- I can use pastels to create a colourful sky.
- I can draw the outline of the building in my picture and leave the building the same colour as the paper.
- I can create a reflection of the building in the water.
- I can explain that Monet painted the same scene lots of times.
- I can explain that Monet used colours to capture changing light.

# Claude Monet

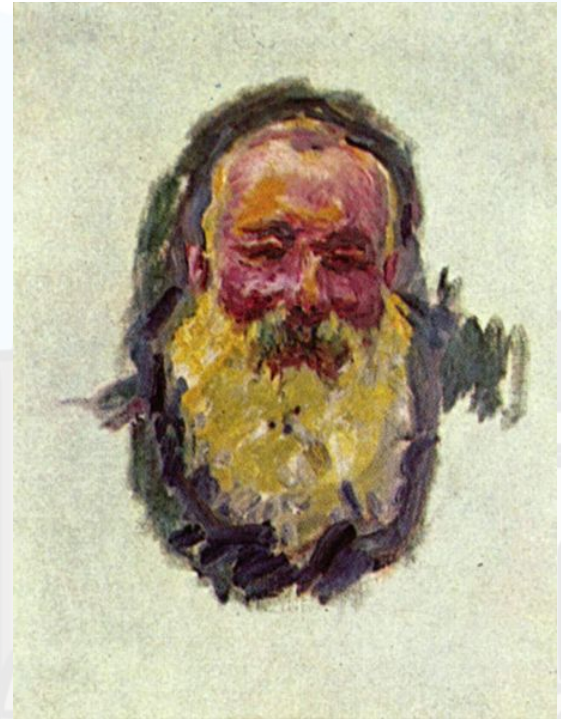
Oscar-Claude Monet was a French painter, born in 1840.

He was a founder of French Impressionist painting.

The term “Impressionism” comes from the title of his painting, *Impression, Sunrise*.

He enjoyed painting in the outdoors, and painted landscapes at different times of day and in all kinds of weather.

He often painted the same scene more than once, to capture the changing light and different seasons.





# Colour and Light

## Haystacks



Last lesson we looked at 3 similar paintings that Monet had painted of haystacks.

The colours were slightly different in each one.



Attribution - Photo courtesy of CarlosR38 and Sharon Mollerus (@flickr.com) - granted under creative commons licence - attribution

# Colour and Light

## Capturing Light

Monet was passionate about painting outdoors.

Monet often painted the same scene many, many times.

He was interested in capturing the changing light at different times of day.

He also painted the same scene in different seasons.

He was interested in the way that the colours differed with the time of day, the weather, and the time of year.





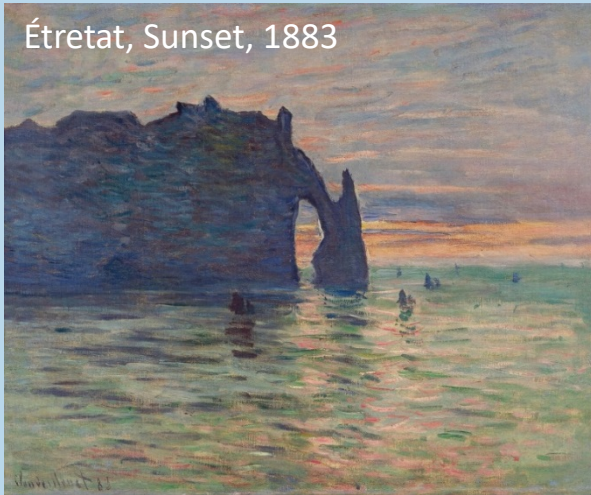
# Colour and Light

## Étretat Sunsets

These two paintings are similar because they both show the same place at sunset. You can see Monet's brushstrokes in both.

There are lots of differences between them. The colours of the sky are very different. There are boats in one picture, but not the other. Perhaps these paintings were painted in different weather, or in different seasons.

Étretat, Sunset, 1883



Étretat, Cliff of Aval, Sunset, 1885



# Spot the Difference



Here are 2 more paintings of Étretat.

How are they similar?

How are they different?

Monet - Étretat, la Porte d'Aval, 1885



Stormy Sea in Étretat, 1883



Attribution - Photo courtesy of Eusebius@Commons and jwyg (@flickr.com) - granted under creative commons licence - attribution

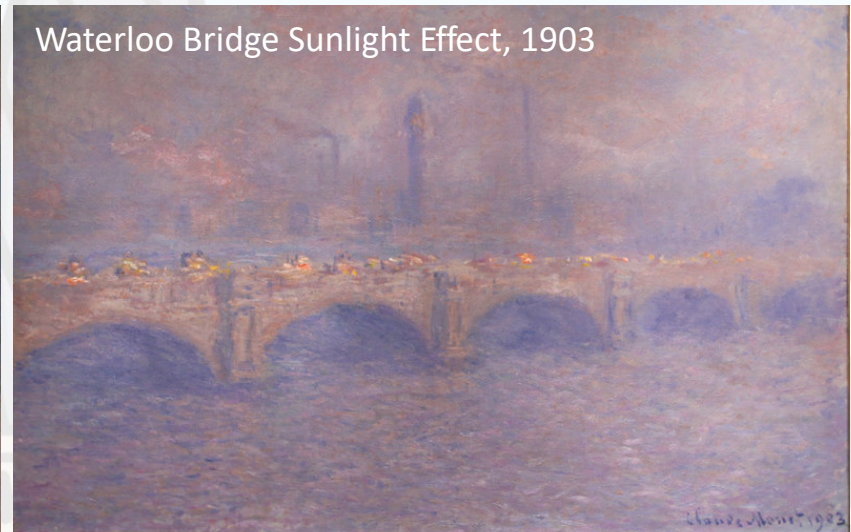


# Cityscapes

## Waterloo Bridge

As well as painting landscapes many times, Monet also painted lots of cityscapes over and over again.

Here are 2 different paintings of Waterloo Bridge in London, England.

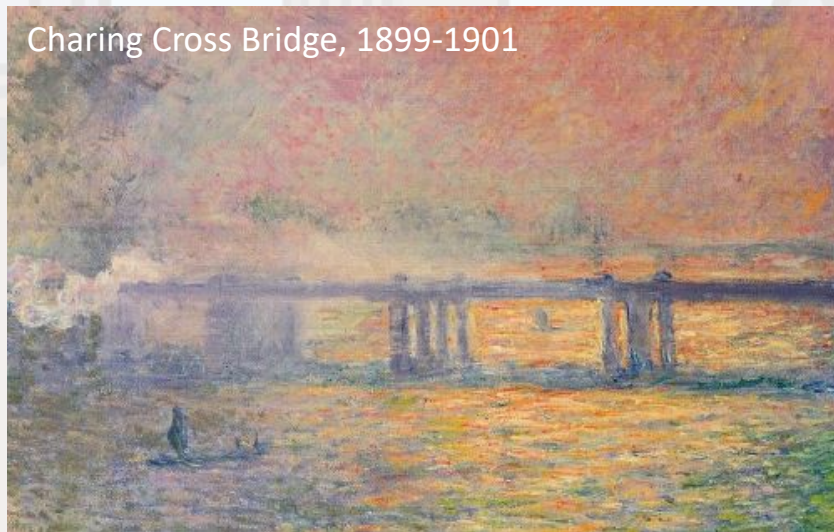


Attribution - Photo courtesy of CarlosR38 and Tony Hisgett (@flickr.com) - granted under creative commons licence - attribution

# Cityscapes

## Charing Cross Bridge

Monet painted Charing Cross Bridge in London lots of times.  
We are going to see 6 different paintings of Charing Cross Bridge by Monet.  
Think about what stays the same and what changes.





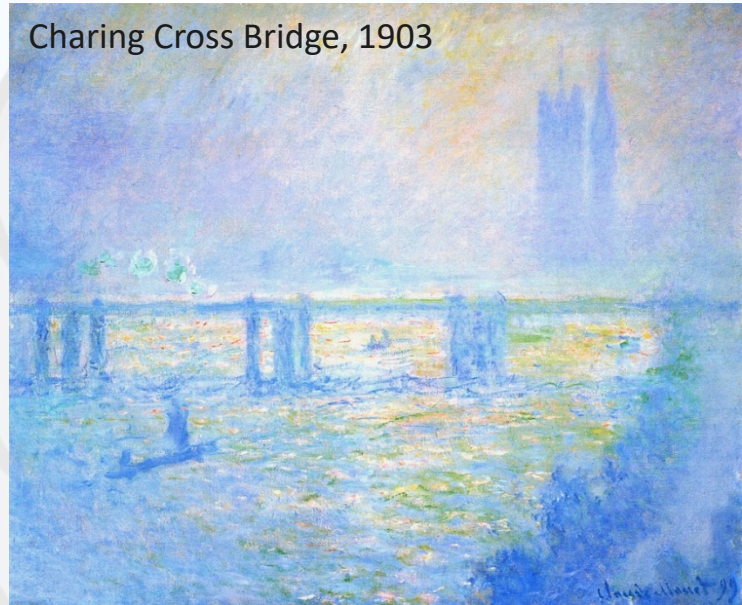
# Cityscapes

## Charing Cross Bridge

Charing Cross Bridge, 1899-1901



Charing Cross Bridge, 1903





# Cityscapes

## Charing Cross Bridge

Charing Cross Bridge, 1899-1901



Charing Cross Bridge, 1903



# Houses of Parliament

Monet painted the Houses of Parliament, in London, many times. He looked out of the window of his hotel to paint the famous building. He liked to paint at certain times of day so that the building was a silhouette. We are going to look at 2 of these paintings. Think about how they are different.



Attribution - Photo courtesy of Martin Hesketh and Sharon Mollerus (@flickr.com) - granted under creative commons licence - attribution

# Houses of Parliament

1902



Attribution - Photo courtesy of emmeffe6 (@flickr.com) - granted under creative commons licence - attribution

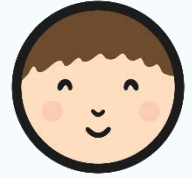


# Houses of Parliament

1904



# Today



Today we are going to be using pastels to recreate these 2 paintings by Monet.

- We will use pastels to colour the sky and the reflection.
- We will use blues and purples for one of the pictures, and reds and yellows for the other.
- We need to draw an outline of the building on the sugar paper, and colour carefully around it.

**Be careful not to smudge your work.**

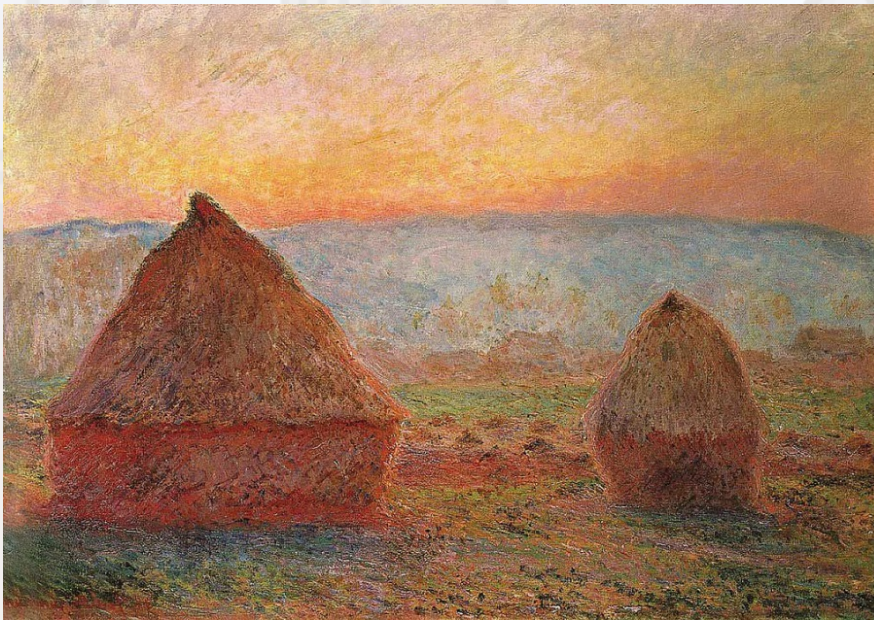




# Landscapes or Cityscapes?



Do you prefer Monet's Landscapes or Cityscapes?  
Explain your answer to your partner.



Attribution - Photo courtesy of CarlosR38 (@flickr.com) - granted under creative commons licence - attribution



# Aim



- I can use pastels to create a cityscape.
- I can describe the work of the artist, Monet.

# Success Criteria

- I can use pastels to create a colourful sky.
- I can draw the outline of the building in my picture and leave the building the same colour as the paper.
- I can create a reflection of the building in the water.
- I can explain that Monet painted the same scene lots of times.
- I can explain that Monet used colours to capture changing light.

