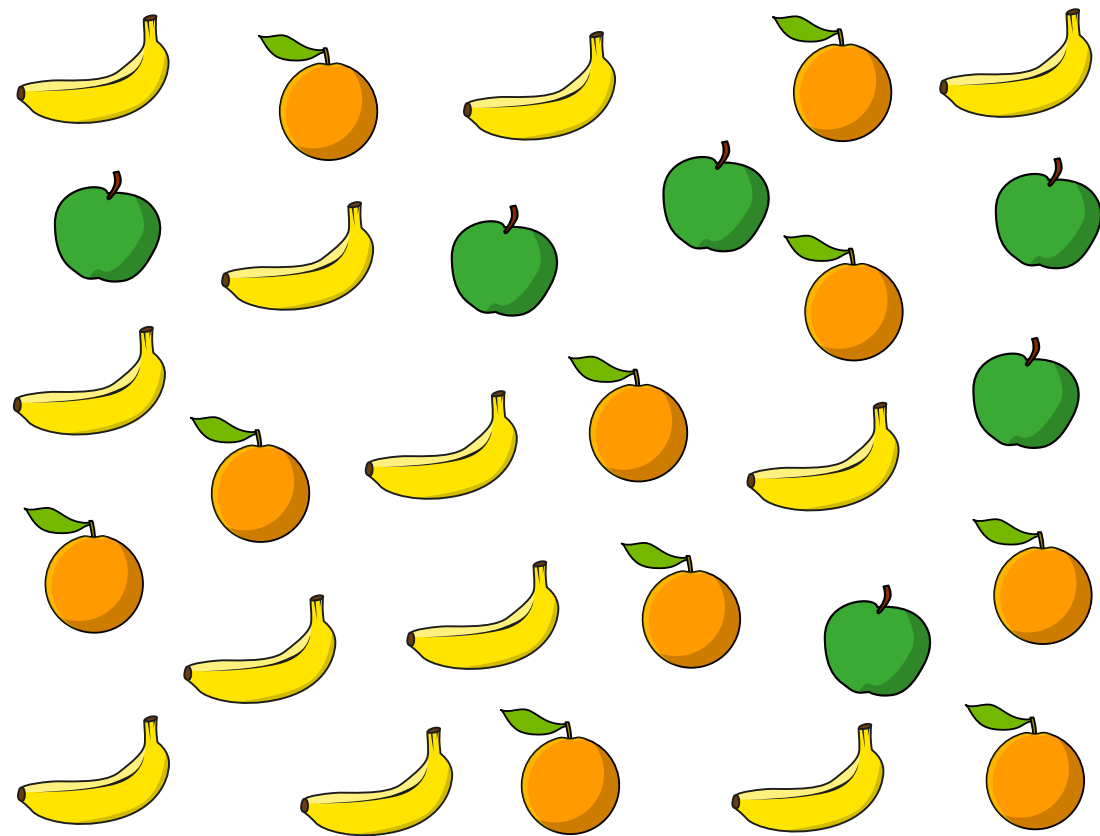


# Draw pictograms (2, 5 and 10)

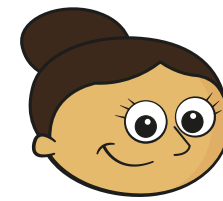
**I** Here is some fruit.



**a)** Complete the tally chart.

| Fruit   | Tally | Total |
|---------|-------|-------|
| Apples  |       |       |
| Oranges |       |       |
| Bananas |       |       |

**b)**



I will use a circle for each piece of fruit.

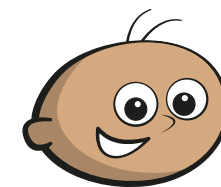
Draw Dora's pictogram.

**Key**

 = 1 piece of fruit

| Fruit   |  |
|---------|--|
| Apples  |  |
| Oranges |  |
| Bananas |  |

**c)**



I will use a circle for every 2 pieces of fruit.

Draw Tommy's pictogram.

**Key**

 = 2 pieces of fruit

| Fruit   |  |
|---------|--|
| Apples  |  |
| Oranges |  |
| Bananas |  |

**d)** Whose pictogram do you prefer? Why?

- 2 Class 2 vote for whether they would like to play tennis, football or netball.

The tally chart shows the votes.

| Sport    | Tally | Total |
|----------|-------|-------|
| Tennis   |       | 5     |
| Football |       | 20    |
| Netball  |       | 10    |

- a) Complete the pictogram.

| Sport    |   |
|----------|---|
| Tennis   | ● |
| Football |   |
| Netball  |   |

Key

● = 5 votes



- b) Complete the pictogram.

| Sport    |   |
|----------|---|
| Tennis   |   |
| Football |   |
| Netball  | ● |

Key

● = 10 votes



- 3 The tally chart shows the weather for 55 days.

| Weather | Tally |
|---------|-------|
| Sun     |       |
| Cloud   |       |
| Rain    |       |

- a) Draw a pictogram to show this information  
Choose your own key.

| Weather |  |
|---------|--|
|         |  |
|         |  |
|         |  |

Key

\_\_\_\_\_

- b) Compare pictograms with a partner.  
What is the same? What is different?

