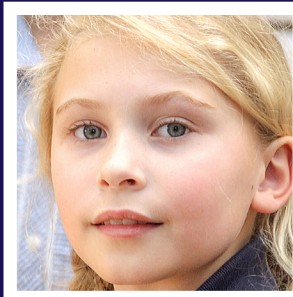




WALTHAM ST LAWRENCE PRIMARY SCHOOL

TOGETHER WE INSPIRE AND ACHIEVE




Ofsted
Outstanding
Provider



The headteacher is uncompromising in her aim to secure the very best possible outcomes for all pupils. Leaders and governors ensure that the right changes are made to teaching and learning so that the school continues to improve.






Ofsted
Outstanding
Provider

Teaching is highly effective.

Senior leaders ensure that the pupil premium funding is spent wisely. They have identified precisely the barriers to learning that disadvantaged pupils face, using their detailed knowledge of individuals.

WELCOME

Our school is a vibrant, caring, friendly and welcoming village school nestling in the beautiful grounds which we make full use of throughout the year.

Here at Waltham St Lawrence we all work as a team to create a happy, safe, caring, stimulating and challenging learning environment where each child is enabled to make excellent progress and achieve their full potential. We value each member of the school community and work together to encourage the potential of all and ensure the best facilities and provision in place. We celebrate our achievement and challenge our children and ourselves to strive for excellence in all that we do.



We hope you will visit us to see for yourself our remarkable school and meet our wonderful children and staff who make it so! Above all, you will see a happy place where everyone can achieve and all the children are equipped with outstanding values and skills which will hold them in such good stead in their lives to come.

I look forward to meeting you and working with you in our school environment.

Li-Juan Ellerton
Head Teacher

For more information visit www.wslprimary.org






Ofsted
Outstanding
Provider

Boys and girls of all abilities make excellent progress from their different starting points.

Pupils of all abilities and backgrounds are welcomed into this nurturing school that is 'here for everybody.'

EVERY CHILD MATTERS

We believe that “Every Child Matters” and everyone in our school is passionate about educating the **WHOLE CHILD**, not only in terms of academic achievement but in creativity, self-confidence, self-esteem, independence and a sense of responsibility. We believe in teaching our children the important values of respect, honesty, kindness and consideration for others and provide the foundations for each individual to grow, develop and be the best they can be.

We take great pride in the excellent behaviour and attitude of our children notably as our school curriculum is securely underpinned by the principles of Education in Human Values.



What our parents have to say:

“I couldn’t have wished for a better school for my child”

“Caring, nurturing and friendly”

“Teachers make learning fun”

“Helpful and encouraging staff”

For more information visit www.wslprimary.org





Waltham St Lawrence Primary School

For more information visit www.wslprimary.org



CHILDREN WANT TO LEARN

It is our job as educators to ensure that we provide inspiration and multiple opportunities for all our children to access, building a 'have-a-go' positive mentality and interests in diverse areas. Whatever a child's starting point in life, developing their internal motivations to succeed is the most effective way of ensuring they will achieve their potential and become confident, independent individuals with key skills for lifelong learning.

We believe that every child

wants to learn and that your children will develop a life-long interest in learning. Our strong ethos as defined by our Human Values based Education and Growth Mindset approach provides a structure that helps each child to believe in themselves and know there are no limits to learning or the opportunities life can offer them.

Our relatively small class sizes throughout the school allow all our children to thrive in a productive, nurturing learning environment where each child's

individual needs are catered for. Each child is challenged to enable them to achieve their very best and to be well prepared for the next phase of their education.

We provide numerous opportunities for our children to celebrate their learning through assemblies and school productions. We like to keep all our parents fully informed of their child's progress via regular Parent Evenings and our "Open Door" Policy enables parents to meet with us whenever the need arises.

Mandarin Chinese is one of the fastest growing languages in the world. As a forward-thinking school we have opted for Year 6 children to learn Mandarin Chinese over European languages. Years 6 pupils have one Mandarin lesson each week and it links brilliantly with other curriculum areas such as Geography and History. It opens children's eyes to other cultures, and creates quite a buzz in the classroom.

It also gives the children an extra option when they go to secondary school.



Waltham St Lawrence Primary School

For more information visit www.wslprimary.org






Ofsted
Outstanding
Provider

Pupils of all abilities and backgrounds are welcomed into this nurturing school that is 'here for everybody.'

Staff know each pupil very well, providing pupils with activities that match their needs closely.

WORKING TOGETHER

At Waltham St Lawrence we know that working in partnership with parents, carers and the community helps children to progress and achieve.

Our parents are encouraged to come in to visit and be as fully involved as possible in school life as Governors, PTA members or as parent helpers.

We organise a number of exciting events throughout the year for children, parents and the wider community to be involved in.



We offer a fantastic Extended School from 8.00am to 6.00pm every day with flexible and affordable child care options available at both the start and the end of the school day for our working parents:

- Breakfast Club from 8.00am to 8.40am
- After School CARE Club from 3.00pm to 6.00pm

(In partnership with Progressive Sports <https://www.progressive-sports.co.uk>)

For more information visit www.wslprimary.org






Ofsted
 Outstanding
 Provider

The school's values ensure that the personal development of pupils is threaded through all aspects of school life.

The wide-ranging curriculum reflects the school motto 'Together we inspire and achieve.'



For more information visit www.wslprimary.org





SCHOOL ROAD, WALTHAM ST. LAWRENCE, READING, BERKSHIRE RG10 0NU

TELEPHONE: 0118 9343248 | EMAIL: OFFICE@WSLPRIMARY.ORG

WEBSITE: WWW.WSLPRIMARY.ORG