



# WALTHAM ST LAWRENCE PRIMARY SCHOOL

## NEWSLETTER

School Road, West End, Berkshire RG10 0NU | Telephone: 0118 9343248 | Email: [office@wslprimary.org](mailto:office@wslprimary.org) | Headteacher: Mrs L-J Ellerton

### Weekly Newsletter Number 28

Friday 2<sup>nd</sup> May 2025

Dear Parents/Carers,

It has been a real pleasure visiting all the classes and seeing the children continue to show such positive attitudes towards their learning, actively engaging with a wide variety of carefully planned activities.

Our **Year 6 children** are working diligently as they prepare for their **SATs**, which will take place during the week beginning **12<sup>th</sup> May 2025**. Although the KS1 SATs in English Reading and Maths are now optional, we believe it is important for our **Year 2 children** to take part in the optional assessments, alongside continuing with our Teacher Assessment in Writing and SPaG in June. Our Year 2 children are making a fantastic final push to improve their spelling and writing skills and we are proud of their efforts.

Our **Year 1 children** have been working hard in their daily phonics sessions with the RWI programme. They are practising their sounds, blending skills, and reading both real and pseudo (nonsense) words to get ready for the **Year 1 Phonics Screening Check** during the week of **9<sup>th</sup> June**. We are really pleased with their fantastic effort and growing confidence. Some children would benefit from a little extra practice with their sounds and blending at home over the coming weeks, and we will be sending home additional resources to help with this. We greatly appreciate all the support you are giving at home to help them succeed!

Meanwhile, the **Reception children** in Owls Class have settled in exceptionally well and are showing wonderful levels of independence. I am particularly impressed with how confidently our youngest learners are applying their phonics skills to both reading and writing!

Please continue to support your children by **reading daily at home, practising their phonics, spelling, mastering number bonds and times tables** and **encouraging rich learning discussions at home**. **Completing their set homework to a high standard also makes a real difference**. Your support at home is invaluable and has a huge impact on your child's success. Thank you for all that you do!



A huge well done and thank you to all the children in Owls Class for a fantastic Class Assembly on Wednesday this week. They showcased some of their learning from this term, including a presentation of their phonetic knowledge of digraphs and trigraphs. This assembly effectively integrated various aspects of the curriculum, including Music, Maths, Art and Balanceability. It was wonderful to witness the children's remarkable progress and growth. They sang a Peter Rabbit song for Easter and a number bond to 10 song with impressive clarity and confidence, especially considering this was their first whole school assembly. Thank you to Miss Painter, Mrs Whyte and TAs for their guidance and encouragement. Thank you to parents and friends for coming and we hope you all enjoyed it and feel proud of your child/ren's progress.



### What have we been learning in school?

This week Red Kites have been planning their Historical Fiction short stories based in Victorian London. To start this task, they worked in teams to brainstorm vocabulary, characters and settings and then thought about dilemmas or problems for their characters to solve. This helped build a wide variety of options to choose from to create their own story plans. The aim is for these stories to be as authentic to the period as possible, so the children are undertaking research to make sure they get all the details right! Red Kites will be writing these stories over the next week, so watch this space for some amazing new fiction coming soon!



“TOGETHER WE INSPIRE AND ACHIEVE”



Last Friday, all the children took part in our **Mini London Marathon** sponsored event. It was fantastic to see the children demonstrating such resilience and stamina, with each completing eight laps around the school playing fields! The energy, determination and teamwork from everyone were truly inspiring.

A big thank you to the parents who came along to help, cheer, and support the children — your encouragement made the event even more special. We are also very grateful to Mr Errington, in his role as PE Subject Leader, for coordinating the event so smoothly, and to Mrs Marshal-Pullin for making us aware of this brilliant opportunity and rallying parental support. A huge thank you as well to all the staff for their encouragement and enthusiasm on the day — helping to make it a memorable experience for everyone.

The event wasn't just about keeping fit — it was about coming together as a community, enjoying the spirit of the day, and raising valuable funds. The money raised will go towards purchasing new equipment to make our lunch hour even more active and enjoyable for all the children.

If you have collected any sponsor money, please return it to the school office by **Thursday 9<sup>th</sup> May 2025**. Thank you for your ongoing support and generosity!

Here are some photos from the day for you to enjoy — we hope they capture the energy and joy of the event!



**Core Value – Community:** During the next two weeks we will be focusing on the value of **Kindness to Animals**. Children in their class will have a discussion on this topic and are encouraged to think about 'How do you show kindness to animals? How might you support the welfare of animals? You may want to spend some time at home with your child/ren exploring the meaning of this quote *'The question is not, 'Can they reason?' nor 'Can they talk?' but 'Can they suffer?'* — Jeremy Bentham, English philosopher (1748-1832) What might he mean?

#### Reminder and Upcoming Event

Thursday 8<sup>th</sup> May - Rumble in the Jungle Performance Workshop for EYFS and KS1 children in school.

**21<sup>st</sup> May Health Screening for EYFS children (height and weight) in school** – please send in your consent as soon you can.

**Monday 5<sup>th</sup> May is May Bank Holiday and the school will be closed.** We will see everyone back safely on Tuesday 6<sup>th</sup> May 2025.

Have an enjoyable Bank Holiday weekend!

Li-Juan Ellerton  
Headteacher



## Sunshine Book

Congratulations to all the children for demonstrating the School Values, following the School Golden Rules and going above and beyond with their learning throughout this week.

<b>Owls</b>	All of Owls Class	
<b>Nightingales</b>	Mia M	Lily S
<b>Robins</b>	William L	Ridley J
<b>Skylarks</b>	Ava M	Oscar P
<b>Red Kites</b>	Darcy E	William E
<b>Kestrels</b>	Tilly M	Ben T

## House Points

	Weekly Total	Rolling Total
Brunel (Blue)	332	474
Galileo (Green)	252	432
Redgrave (Red)	346	562
Yeats (Yellow)	363	618

The Winning House's for this week is **Yates**. Well done.

## Attendance for the Week

Excellent attendance and punctuality maximise potential! *Every day and every lesson counts!*

Class Attendance: 28-04-25 to 02-05-25

Owls 96.6%	Skylarks 99.6%
Nightingales 94.9%	Red Kites 95.5%
Robins 92.1%	Kestrels 98.7%
Whole School 96.6%	

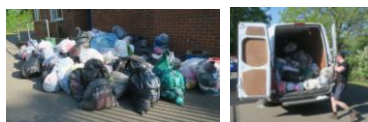


## Habit of the Month

In **May**, children will continue to focus on **Only My Best Will Do – Being more thoughtful and taking pride in own learning and behaviour**. This is part of daily routines, please continue to support us by having high expectations for your child/ren and helping them all form good habits.

## Bag2School Collection

Together we collected **661kg** and raised **£132.00!** Thank you so much for your support!



## Termly Curriculum Overview

Termly Curriculum Overviews have been uploaded on the school website under 'Curriculum' Section. You can access them via the link here <http://wslprimary.com/curriculum/>. They give you a broad overview of the learning that takes place in Term 5 & 6 for your children.

## Expectation for Morning Drop-Off

As we enter the final terms of this academic year, **we would expect ALL of the children from Reception to Year 6 to come to school independently**. Please say good bye to your child at the entrance gate or use Stop and Drop Zone and let your child/ren walk into the school by themselves. This will encourage children to **develop self-help skills and independence** and settle in quickly to the day ahead. Thank you for your support.

## KS2 Year 6 SATs Dates 2025

The dates for this year's Year 6 SATs are **Monday 12<sup>th</sup> – Thursday 15<sup>th</sup> May 2025**. If your child is in Year 6, it is vital that they are in school that week.

## School Censor Day

The next **School Census Day** is **Thursday 15<sup>th</sup> May 2025**. We will swap the menu for Thursday and Friday and have Fish and Chips on Thursday 15<sup>th</sup> May instead to increase the take up rate. **Please support the school by ordering the FREE School Meal for Foundation Stage, Year 1 and Year 2 and any KS2 children who are entitled to FSM on this day**. This will ensure we will get funding and there will be no shortfall. Thank you.

## Primary Assessments Dates 2025

**Year 1 Phonics Screening Check** will take place in **w/c 9<sup>th</sup> June 2025**.

**Year 4 Multiplication Tables Check** will start in **w/c 2<sup>nd</sup> June to 13<sup>th</sup> June 2025**.

It is vital that the children are in school during these very important periods

## Parking Reminder – Please Be Considerate

We have received a message from a local resident living on Brook Lane regarding concerns about parking at pick-up times.

Please can we remind all parents and carers:

- **Do not park on the verge opposite houses**
- **Avoid turning around in driveways** – this has resulted in damage to posts and fences
- **Ensure your vehicle is not blocking the road**, as this can prevent access for emergency services

Let's work together to be respectful of our neighbours, be more considerate and courteous when parking on the road after school and help keep everyone safe.

Please follow the Highway Code:

- NO PARKING on the Double Yellow Lines at the junctions of Brook Lane and Baileys Road
- NO PARKING on 'Keep Clear' markings
- The entrance must be kept clear of stationary vehicles.

Thank you for your cooperation

## Dog-Free Zone Reminder

We kindly ask all parents to ensure **their dogs are tied away from the school entrance**. Some children are frightened by dogs, and keeping them at a distance helps create a safe and comfortable environment for everyone. Thank you for your cooperation and understanding.

## Woodpeckers Club Booking and Collection Reminder

If you require any childcare, please use our After School **Woodpeckers Club**. Please **book in advance to help us ensure appropriate staffing, maintain correct staff-to-child ratios, and uphold our safeguarding procedures**.

Please ensure your child is collected promptly at the end of their session, no later than 6.00pm. **A standard late collection charge of £20 will be issued for delays**, as this impacts staff working hours. Thank you for your understanding and cooperation.



Our mission is to provide inspiration and opportunities for all children to achieve their potential and become confident, independent individuals with key skills for lifelong learning

School Values: Truth Love Peace Responsibility Community

Staff and Governors of Waltham St Lawrence Primary School are committed to the safeguarding of children

Designated Safeguarding Lead: Mrs Li-Juan Ellerton (Headteacher)

Deputy Designated Safeguarding Lead: Mr David Errington (Deputy Headteacher)

Safeguarding Governor: Mrs Harmit Kaur Thiara (Parent Governor)

Governors can be contacted via email to [clerk@wslprimary.org](mailto:clerk@wslprimary.org)

#### Dates for Your Diary

#### The Academic Year 2024-2025

##### Term 5 (23 days)

##### May

Mon 5 <sup>th</sup>	May Day Bank Holiday – School is closed	
Thurs 8 <sup>th</sup>	Performance Workshop for EYFS & KS1	10.30-12.00
Mon 12 <sup>th</sup>	Year 4 Mathemagical Competition (Team of 3)	4.30-6.00pm
12 <sup>th</sup> -15 <sup>th</sup>	KS2 SATs Week	
Thurs 15 <sup>th</sup>	School summer Census Day	
Wed 21 <sup>st</sup>	EYFS Health Screening (Height and Weight) in School	9.30am
Thurs 22 <sup>nd</sup>	Young Apprentice Competition	1.00-2.30pm
Fri 23 <sup>rd</sup>	End of Pupil Term	3.10pm

May Holiday: Monday 26<sup>th</sup> May 2025 to Friday 30<sup>th</sup> May 2025

##### Term 6 (38 days)

##### June

Mon 2 <sup>nd</sup>	Staff Inset Day	
Tues 3 <sup>rd</sup>	Start of Pupil Term	
Tues 3 <sup>rd</sup>	KS2 Class Organisation Information Meeting for Parents	2.15pm
Wed 4 <sup>th</sup>	Road Safety Workshop for Kestrels Class	1.15pm
Thurs 5 <sup>th</sup>	Year 5 Science Day at Holyport College – detail to follow	1.00-3.00pm
Fri 6 <sup>th</sup>	It's Your Move – Year 6 Transition Talk	1.15pm
Sat 7 <sup>th</sup>	Village Festival	1.00-6.00pm
9 <sup>th</sup> – 13 <sup>th</sup>	Year 1 Phonics Screening Check	
2 <sup>nd</sup> – 13 <sup>th</sup>	Year 4 Multiplication Tables Check	
Thurs 19 <sup>th</sup>	Year 2 Mighty Maths Competition (Team of 3) at WSL (Host)	4.30-6.00pm
Thurs 19 <sup>th</sup>	Last Chinese Club	
Thurs 26 <sup>th</sup>	Sports Day	1.30pm
Fri 27 <sup>th</sup>	Whole School Trip to Marwell Zoo	8.30am-3.10pm
Mon 30 <sup>th</sup>	Sports Day – Reserve	
Sat 5 <sup>th</sup>	Music Party in the School Playing Field	
Mon 21 <sup>st</sup>	Year 6 Leaving Party	4.00-6.00pm
Wed 23 <sup>rd</sup>	End of Pupil Term	

Summer Holiday: Thursday 24<sup>th</sup> July 2025 – Tuesday 2<sup>nd</sup> September 2025

#### The Academic Year 2025-2026

##### Term 1 (38 days)

##### September

Wed 3 <sup>rd</sup>	Staff Inset Day	
Thurs 4 <sup>th</sup>	Start of Pupil Term	
Fri 24 <sup>th</sup>	End of Pupil Term	

##### October

October Holiday: Monday 27<sup>th</sup> October 2025 to Friday 31<sup>st</sup> October 2025

Please do not book family holidays during term time. Please note that Staff Inset Days are subject to change.

Dates /times added/changed will be highlighted

All dates to the end of the year can also be found on the school website [www.wslprimary.org](http://www.wslprimary.org)

Information / Letters sent home or can be accessed on the school website last & this week:

Reminder of Bag2School to all

Reminder of Class Assembly to Owls

NHS Headlice guidance to Skylarks and Kestrels

Waltham St Lawrence and Shurlock Row Summer Fete 2025 Raffle Tickets to all

Familes Thames Valley West Magazine to all